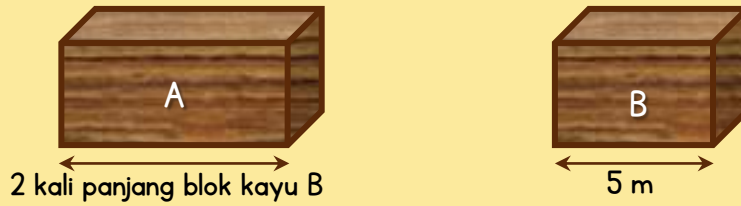
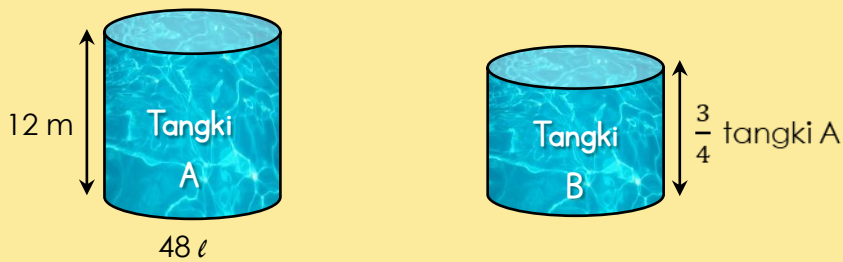


Panjang dan Jisim



Blok kayu	A	B
Panjang	$2 \times 5 \text{ m} = 10 \text{ m}$	5 m
Jisim	500 g	$500 \text{ g} \div 2 = 250 \text{ g}$

Panjang dan Isi Padu Cecair



Tangki	A	B
Panjang	12 m	$\frac{3}{4} \times 12 \text{ m} = 9 \text{ m}$
Isi padu	48 l	$\frac{3}{4} \times 48 \text{ l} = 36 \text{ l}$

Jisim dan Isi Padu Cecair

RESEPI SATU HIDANGAN DADIH

- 360 g serbuk dadih
- 0.3 l air
- 100 g gula

Jisim serbuk dadih	360 g	900 g ($\frac{900}{360} = 2.5$)
Isi padu air	300 ml	$2.5 \times 300 = 750 \text{ ml}$
Jisim gula	100 g	$2.5 \times 100 = 250 \text{ g}$